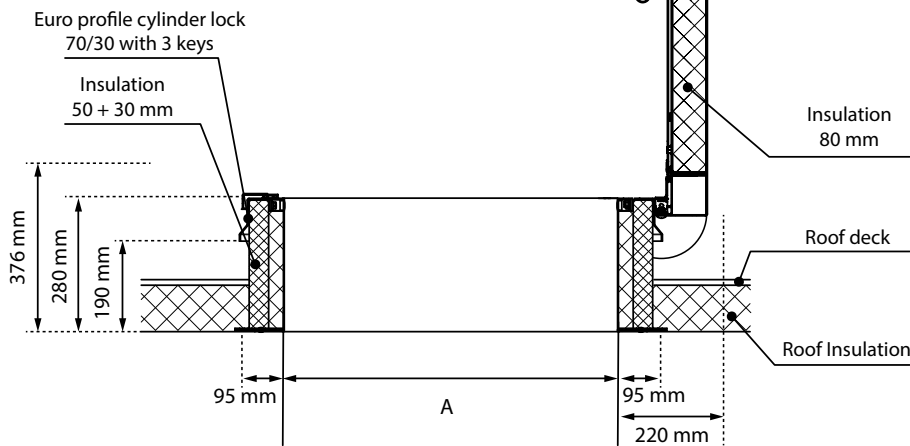
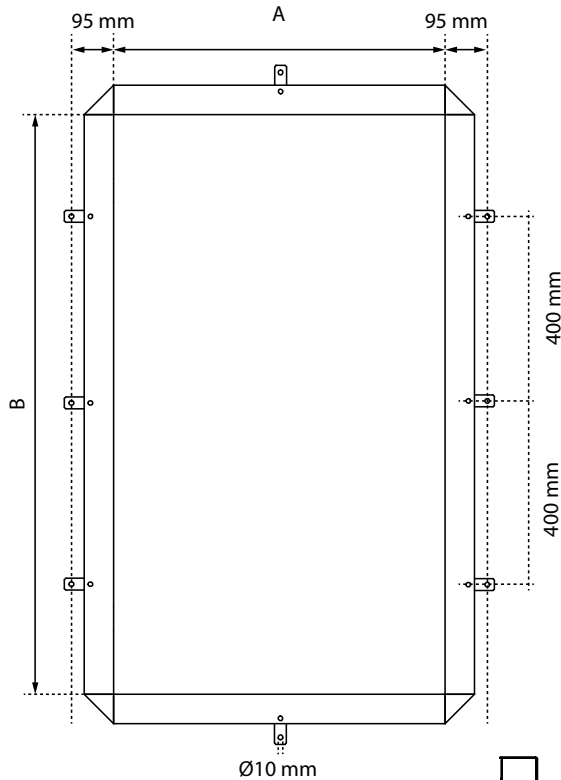
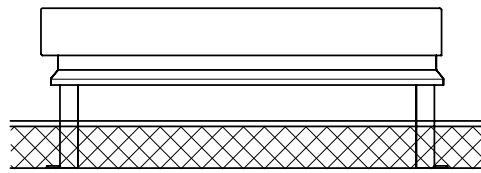
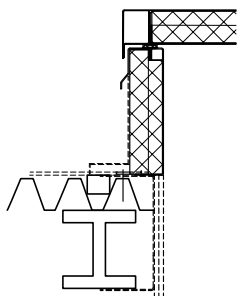


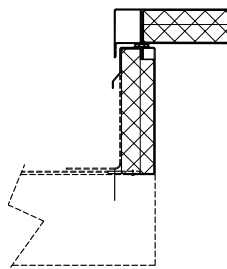
# Technical Data Sheet - Roof Hatches RHT/RHTEI/RHTX



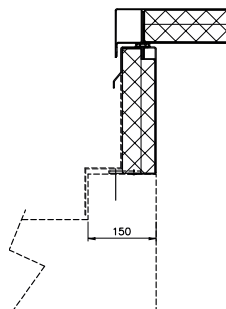
Steel



Concrete



Elevated curb



## Type RHT

### Roof hatch, single lid, aluminium

Type	A	B	Weight
RHT7090	700 mm	900 mm	38 kg
RHT9090	900 mm	900 mm	44 kg
RHT7014	700 mm	1400 mm	52 kg
RHT1010	1000 mm	1000 mm	50 kg
RHT1015	1000 mm	1500 mm	65 kg
RHT1020	1000 mm	2000 mm	82 kg
RHT9024	900 mm	2400 mm	89 kg

## Type RHTEI

### Roof hatch, fire rated 120 minutes

Type	A	B	Weight
RHTEI7090	700 mm	900 mm	134 kg
RHTEI9090	900 mm	900 mm	157 kg
RHTEI7014	700 mm	1400 mm	185 kg
RHTEI1010	1000 mm	1000 mm	180 kg
RHTEI1015	1000 mm	1500 mm	236 kg
RHTEI1020	1000 mm	2000 mm	298 kg

## Type RHTX

### Roof hatch, explosion vent

Type	A	B	Weight
RHTX1010	1000 mm	1000 mm	58 kg
RHTX1015	1000 mm	1500 mm	72 kg
RHTX1020	1000 mm	2000 mm	87 kg

## Usage

Roof hatches are generally only suitable for concrete, steel and wooden roofs. On higher roofs as well. Maximum slope of the roof as per table below.

Roof hatch type	Maximum roof angle
RHT	: 30°
RHTEI	: 5°
RHTX	: 0°



### RHT

ETA 15/0338

#### Gortergroup Roof Hatch with Thermalbreak

Resistance to permanent load, concentrated and uniformly distributed (Eurocode EN 1993-1-1)	: 1050 kg/m <sup>2</sup>
Thermal transmittance (EN-ISO 10077-2)	: U <sub>g</sub> ≤ 0.32 W/(m <sup>2</sup> ·K)
Resistance to snow load (EN 1991-1-3)	: 3.97 kN/m <sup>2</sup>
Resistance to wind load (EN 12210)	: Class E 3000
Water tightness (EN 12208)	: Class E 650
Impact, hard body (EN 356)	: Class PSA
Impact, soft body (EN 13049)	: Class 5
Airborne sound insulation (EN-ISO 717-1)	: 26 dB
Air permeability (EN 12207)	: Class 3
Content and/or release of dangerous substances	: Declaration of manufacturer

## Structural opening size

- The opening size of the roof hatch will match the structural opening size of the roof.
- If combined with a scissor stair attic ladder, the opening size may differ - please consult [www.gortergroup.com](http://www.gortergroup.com) for confirmation.

User manual and installation instructions supplied with product.

